

****BRAND NEW****

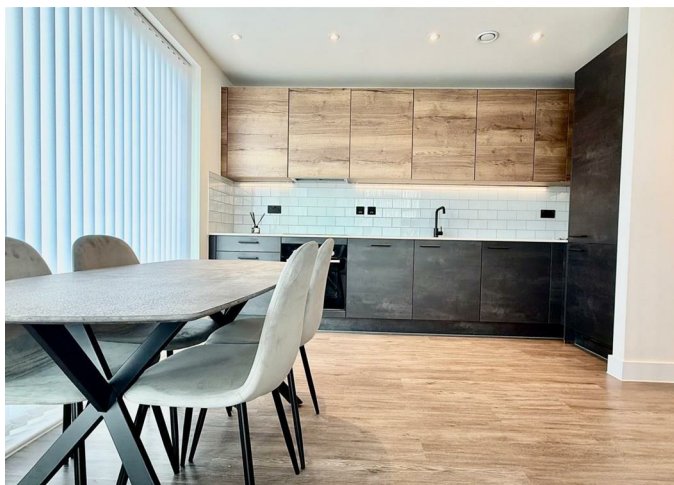
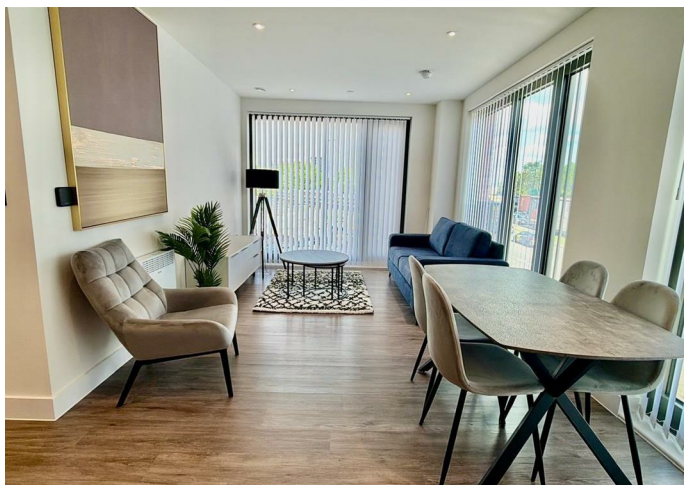


**104 CURZON
WHARF,
GLASSWATER
LOCKS 3 PITT
STREET,**

£1,400 PCM

FEATURES

- BRAND NEW HOME- BE THE FIRST TO MOVE IN
- CORNER PLOT FLOODED WITH NATURAL LIGHT
- GYM, CINEMA, CONCIERGE, GAMES ROOM & MORE!
- TWO DOUBLE BEDROOMS WITH ENSUITE
- ZERO DEPOSIT OPTION AVAILABLE
- LUXURY FURNISHINGS THROUGHOUT
- SPACIOUS CORRIDOR & AMPLE BUILT-IN STORAGE



BRAND NEW 2 BEDROOM APARTMENT IN BIRMINGHAM CITY CENTRE

****ZERO DEPOSIT AVAILABLE - ENQUIRE FOR DETAIL****

Step into modern luxury with this brand-new apartment at Glasswater Locks, a landmark canalside development in the heart of Eastside, Birmingham, just moments from Aston University and Birmingham City University.

Completed in 2026, this stylish two-bedroom, two-bathroom home spans 678 sq ft of carefully considered living space. Every detail has been designed to maximise light and functionality, creating a bright and inviting home you'll love from the moment you arrive.

The apartment is fully furnished with high-quality, interior-designed pieces included in the price, meaning you can move straight in without the hassle of furnishing.

The open plan living and dining area features floor-to-ceiling windows with Juliette balconies, giving you fresh air and a direct connection to the vibrant canalside setting. Two sleek bathrooms finished to a high specification add a touch of everyday luxury.

As a resident, you'll enjoy access to premium on-site facilities including a concierge, state-of-the-art gym, private cinema room, stylish coffee lounge and tranquil library — perfect for work, relaxation or entertaining guests.

Beyond your apartment, Eastside offers a buzzing lifestyle with cafés, bars and cultural hotspots on your doorstep, while Birmingham city centre is only a short stroll or tram ride away.

Call us on

0121 667 0343

hello@swift-property.co.uk

www.swift-property.co.uk

Council Tax Band

C



Agents Note: Whilst every care has been taken to prepare these particulars, they are for guidance purposes only. All measurements are approximate and are for general guidance purposes only and whilst every care has been taken to ensure their accuracy, they should not be relied upon and potential buyers are advised to recheck the measurements.